

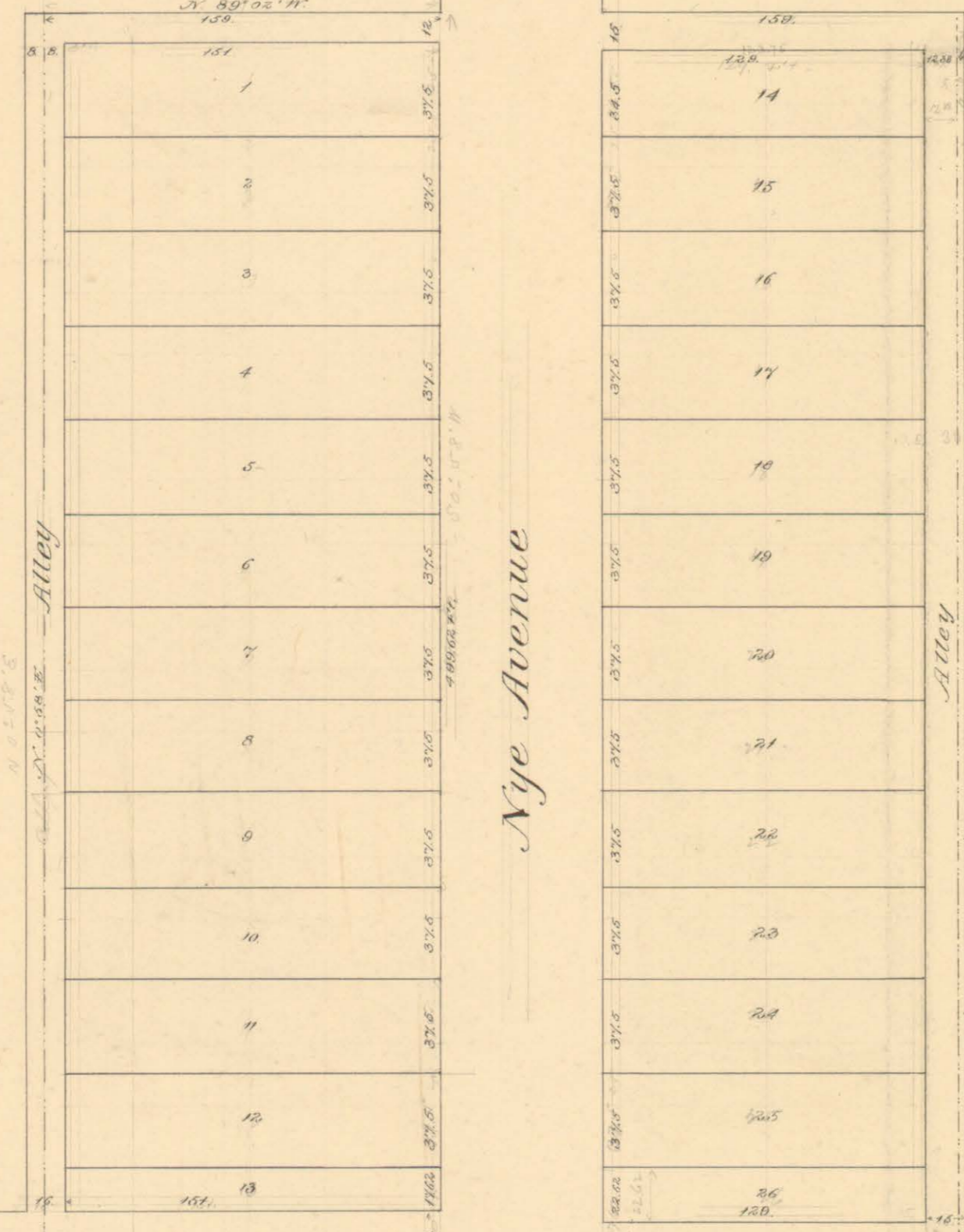
28th Street

29th Street

Pacific Street

Nye Avenue

Wall Avenue



Map showing subdivision of a part of Lot 14, Block 10, South Ogden Survey.

Scale 60 Ft. = 1 in. May 18, 1891. Washington, Jenkins C.E.

N.E. Cor. Lot 14, B. 10.

S.E. Cor. Lot 14.